



Digital KVM Matrix  
19 inch 1U form factor  
Management server

## ADDERLink INFINITY Manager

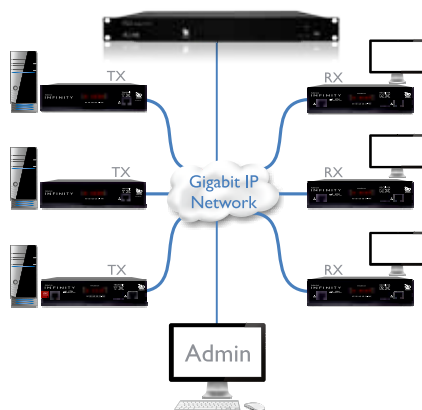
AdderLink Infinity Matrix management server (A.I.M.)



### PRODUCT IN BRIEF

The A.I.M. management server is a control suite which transforms AdderLink Infinity extenders into a digital matrix solution. Using standard IP infrastructure it is possible to route any user station to any computer attached to the network without any compromises to video quality or control. It allows co-operative sharing of computers and the multicasting of video to any destination.

- Intuitive, multi-lingual user interface
- Multiple switching methods
- Configurable user access rights
- Full audit trail
- Easy centralized management
- Open API for 3rd party control



### FEATURES – System administration

#### Secure access and communications

Using TLS (transport layer security) and HTTPS, communications between AdderLink units and A.I.M. and between A.I.M. and the outside world are all secure.

#### Redundant operation

For 24/7 reliability a second hot A.I.M. can be added to ensure constant uptime and with dual NIC interfaces on every AdderLink Infinity unit, systems can be easily designed for maximum resilience.

#### User access rights management and audit trails

Administrators can manage access rights to each device on a user by user basis either manually through the web browser or automatically using Active Directory. Reports showing the history of devices, user logins and device connections can be viewed and exported to a CSV file or via SYSLOG.

#### Easy centralized management

Accessed via a web browser, the dashboard gives a real time overview of system connections and users. Tabs enable you to navigate between settings and device or user sub-menus.

#### Control Channel and Presets connections

A.I.M. can be used to make connections between an individual pair of transmitter and receiver devices centrally from within the management system. Using Presets, a list of pre-defined connections, multi-screen, video wall or signage setups can be forced with a single click.

#### Internationalization

The user desks can select different keyboard configurations to suite their requirements and as a global setting select the language for the OSD from a choice of over 14 languages.

### FEATURES – Intuitive user interface

#### On screen display at each user station

Users login and choose channel connections from an intuitive OSD similar to that of a Digital TV. Users can also use Presets to change channels for multiple screens across multiple receivers.

#### Remote OSD

The remote OSD allows the user to “push” video and control to another station or to a video wall or projector.

#### Favourites and hotkey switching

Each user can select their favourite channels within the OSD and allocate a hotkey for fast switching between channels.

#### Choice of connection modes

Administrators can choose to give users the ability to connect in three modes: View only, Shared or Exclusive. Each permitted mode is then made available within the OSD.

#### Fast video and USB switching

The switching time between computers is less than 1 second to provide a quality user experience.

# ADDERLink INFINITY Manager

AdderLink Infinity Matrix management server (A.I.M.)

## Multicasting

Network multicasting allows the system to share video simultaneously from one transmitter to an unlimited number of receivers. Suitable for signage, monitoring and sharing of desktops.

## USB sharing

USB sharing allows multiple users to connect to and control a single computer at the same time. Each transmitter can report 12 unique USB devices (identified by VID/PID codes) but will merge devices with the same ID to allow many more.

## Channels

Considered as a Virtual Transmitter, a channel may combine video, audio and USB from different transmitters as a single source. Ideal where audio alerts or mixed video sources are required.

## Open API for 3rd party control systems

Adder Technology publishes a simple API structure to allow easy integration with other 3rd Party control systems supplied by companies like AMX, Crestron, HRS or MediaLon at a HTTP level.

## LDAP integration

To help ease setup, the system has an LDAP interface so users and passwords from other systems can easily be imported.

## SNMP v3 get / walk

External machines can interrogate A.I.M. to find out the status of the AdderLink Infinity network and units. SNMP v3 security is implemented, supporting AES/DES transport with MD5/SHA authentication.

## External NTP server support – NTPv4.2

Connect up to 3 NTP servers with authenticated connections using MD5 and Key ID as defined in the NTP standards. All AdderLink Infinity units in an A.I.M. network now get time using authenticated NTP from A.I.M.

## System backups

Backups of the database can be saved internally, externally or emailed automatically. Automatic updates can be scheduled on an hourly, daily or weekly basis.

## Centralized firmware upgrades

As well as managing its own firmware upgrade, A.I.M. manages the upgrade of each device on the network and can deploy firmware to hundreds of devices at the same time, meaning a system-wide upgrade takes only a few minutes.

## Easy matrix setup

Using Zero Configuration networking, A.I.M. automatically obtains the MAC addresses of extender devices as they are attached to the network. The administrator allocates IP addresses, names and locations so that devices are easy to identify, configure and control.

## ORDERING INFORMATION

### Hardware

AIM-24-XX AIM Manager licenced to 24 end points

### Software Licence Upgrade

AIMLIC-48 AIM Manager licence to 48 end points  
AIMLIC-96 AIM Manager licence to 96 end points  
AIMLIC-192 AIM Manager licence to 192 end points  
AIMLIC-288 AIM Manager licence to 288 end points  
AIMLIC-UNL AIM Manager licence to unlimited end points

XX = Mains Lead Country Code:  
UK = United Kingdom  
US = United States  
EURO = Europe  
AUS = Australia  
JP = Japan

## TECHNICAL SPECIFICATIONS

### Hardware

Industrial spec server with solid state memory.

### Software

Closed system operating Linux.

### Physical design

19 inch 1U rack mountable chassis in a robust metal construction. 432mm/17" (w), 44mm/1.73" (h), 230mm/9" (d), 2.75kg/6lbs.

### Power

External power IEC input unit, 100-240VAC 50/60Hz, 1.5A, input to power adapter. 12VDC, 60W output.

### Operating temperature

0 to 40°C / 32 to 104°F.

### Approvals

CE, FCC.

## RELATED PRODUCTS

Adder offer a vast range of products to suit your needs. Other products you may be interested in include:

ADDERLink INFINITY  
ALIF1002P; ALIF1002R;  
ALIF1002T



ADDERLink INFINITY  
Dual  
ALIF2002P; ALIF2000R;  
ALIF2002T; ALIF2020T  
ALIF2020R



ADDERLink INFINITY dual  
VNC  
ALIF2112T



ADDER RED PSU  
PSU-RED2-8; PSU-RED2-16;  
PSU-RED1-8; PSU-RED1-16



© Copyright 2015 Adder Technology Ltd. All brand names and trademarks are the property of their respective owners. SC-ALIF\_AIM\_v4-2.indd

## ADDER TECHNOLOGY

Head Office  
Tel: +44 (0)1954 780044 Fax: +44 (0)1954 780081  
email: sales@adder.com www.adder.com

## ADDER CORPORATION

USA and Canada  
Tel: +1 888 932 3337 Fax: +1 888 275 1117  
email: usasales@adder.com www.adder.com

## ADDER ASIA

Asia Pacific  
Tel: +65 6288 5767 Fax: +65 6284 1150  
email: asiasales@adder.com www.adder.com



# ADDER®