



High density rack drawer with fully featured USB and Video control

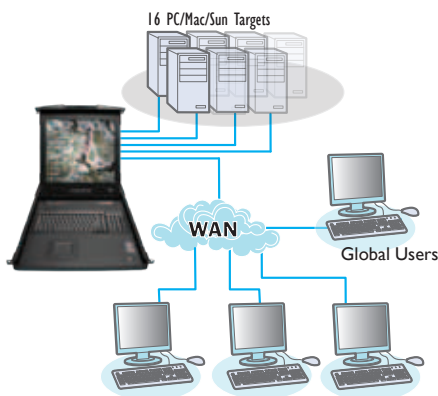
## ADDER RACKVIEW IP 5000

High density fully featured control for local, remote and global users

### PRODUCT IN BRIEF

The Rackview IP 5000 is the complete server room solution with local and remote management. The IU Keyboard drawer available in most keyboard language layouts and features a premium quality Samsung 16:9 1280 x 1024 TFT LCD panel with touchpad control and advanced OSD for device selection. Control 16 devices directly from the drawer together with 4 secure IP users and extendable to 31 devices and 8 IP users.

Using Adder's CAM modules, you can connect the switch via CAT5e cable to any type of server including PC, Mac and Sun. Country code reporting, DDC and continuous keyboard and mouse emulation further ensure faultless operation across your unique installation.



### FEATURES

#### 4 simultaneous IP users

Allows 4 simultaneous global users to connect via IP to any of the 16 connected devices.

#### Multi-platform capability and connectivity

USB/PS2/SUN and serial connectivity on any type of server platform

#### Serial Console Server (SCS):

Rackview can also be used as a serial console (sometimes known as a terminal server) simply by attaching the CATX-CONSOLE computer access module. This gives you out of band access to target command line interface (CLI) as well as console access to network switches.

#### LDAP integration plus ADDER.Net management software.

Automating the task of managing your network hardware and authenticating users against your existing LDAP infrastructure.

#### RS232 control

Integrated RS232 gives you the ability to control other external devices such as power management devices.

#### Configuration and Extension

The Rackview allows you to configure 16 separate users internally with unique access privileges all of which are stored within the switch. A CATx5000 can be cascaded from the unit to enable control of 31 computers from 8 IP users

#### Ecopulse circuitry

Ecopulse powers down unnecessary circuits when not required reducing power requirements. Over the life of the product this will save significant power.

#### Encryption and Authentication

The enterprise grade integrated KVM over IP switch employs AES128 bit encryption and RSA2048 authentication ensuring your control system remains secure at all times.

#### Open Architecture

Adder's continuous improvement policy further ensures your system against future hardware changes - Adder offers free firmware updates for the life of the product. Furthermore, Adder's open architecture design philosophy will not tie you in to specific manufacturer's equipment.

#### Intelligent video thresholding

Adder's innovative active de-artifacting technology automatically calculates the ideal threshold for any computer or KVM switch so that video displays are refreshed with optimum immediacy - while "screen junk" is kept to an absolute minimum.

#### Flexible screen scaling

Adder solutions provide point-and-click screen scaling, so that users can quickly accommodate target devices running any size display with any aspect ratio. Adder solutions also allow users to easily override scaling if and when they require unscaled pixel-to-pixel mapping.

# ADDER RACKVIEW 5000

High density fully featured control for local, remote and global users

## ABOUT ADDER

The ultimate in advanced rack drawer technology with integrated KVM control. 1U Keyboard drawer available in most keyboard language layouts. Features a premium quality Samsung 16:9 TFT LCD panel with touchpad control and advanced OSD for device selection. Control 16 devices directly from the drawer together with 4 secure IP users.

Using Adder's CAM modules, you can connect the switch via CAT5e cable to any type of server including PC, Mac and Sun. Country code reporting, DDC and continuous keyboard and mouse emulation further ensure faultless operation across your unique installation.

To find out more, visit:  
<http://www.adder.com>.

## TECHNICAL SPECIFICATIONS

### Video Modes

Support for standard PC, Sun and Mac video modes up to a resolution of 1600 x 1200 @ 60Hz. DDC emulation supported via connected Computer Access Modules (CAMs).

### Hardware compatibility

Video, mouse and keyboard for PC, Sun, Mac, RS/6000, Alpha and SGI computers using PS/2, USB or Sun flash upgradable Computer Access Modules (CAMs).

### OS compatibility

Operates with all currently known software and operating systems including all Windows versions, DOS, Linux, Unix, BSD, all Sun OS, all Mac OS and NetWare.

### Extendable platform

Cascade a CATxIP 5000 to extend the system to 31 computers and 8 global IP users

### Connections

CATx computer connections: all RJ45 style. 10/100 auto-sensing Ethernet network port: RJ45. Power connection: Locking 3 pin connector (12V DC, 5A). RS232 triggered power switching and syncing: DB9 plug

### Physical design

Compact 1U high metal case construction for rack mounting  
Width: 589mm/17.4", Height: 44mm/1.76", Depth: 650mm/25.6".  
Weight: RD1716QIPxx 15kg/33lbs, RD1916QIPxx 17kg/37lbs.

## ORDERING INFORMATION

Rackview 5000 with 17 inch monitor: **RD1716QIP-XX**  
Rackview 5000 with 19 inch monitor: **RD1916QIP-XX**

<b>XX</b>	= Keyboard type and Mains Lead Country Code:
<b>UK</b>	= English Keyboard + UK IEC
<b>US</b>	= US English keyboard + US IEC
<b>IT</b>	= Italian keyboard + Euro IEC
<b>AUS</b>	= English keyboard + AUS IEC
<b>ES</b>	= Spanish keyboard +Euro IEC
<b>DE</b>	= German keyboard + Euro IEC
<b>NL</b>	= Dutch keyboard + Euro IEC
<b>NO</b>	= Norwegian keyboard + Euro IEC
<b>CH</b>	= Italian keyboard + Euro IEC
<b>RU</b>	= Russia keyboard + Euro IEC
<b>CN</b>	= Chinese keyboard +Euro IEC
<b>JP</b>	= Japanese keyboard + US IEC
<b>FR</b>	= French keyboard + Euro IEC

### ADDITIONAL ACCESSORIES

CAM: Computer Access Modules:  
**CATX-PS2** (PS/2 only),  
**CATX-USB** (USB only),  
**CATX-SUNA** (Sun plus audio)  
**CATX-CONSOLE** (Terminal server)



Example CAM: CATX-USB

## RELATED PRODUCTS

Adder offer a vast range of products to suit your needs. Other products you may be interested in include:

**ADDERView CATxIP 1000**  
AVX1008IP; AVX1016IP



**ADDERView CATx IP**  
AVX4016; AVX4016IP;  
AVX4024; AVX4024IP



**ADDERLink IP**  
ALIP



**ADDERLink IP GOLD**  
ALIP-GOLD



**ADDERLink IPEPS**  
AL-IPEPS; AL-IPEPS-DA



### Power supply

Mains adaptor with IEC style power lead (included).  
Input: 100-240VAC 0.5A 50-60Hz  
Output: 12VDC 5A

### Operating temperature

0 Deg C to 40 Deg C / 32 Deg F to 104 Deg F

### Approvals

CE, FCC



©Copyright 2010 Adder Technology Ltd. All brand names and trademarks are the property of their respective owners. AH-RACK\_draft\_avx5016ip\_v1.ID

